

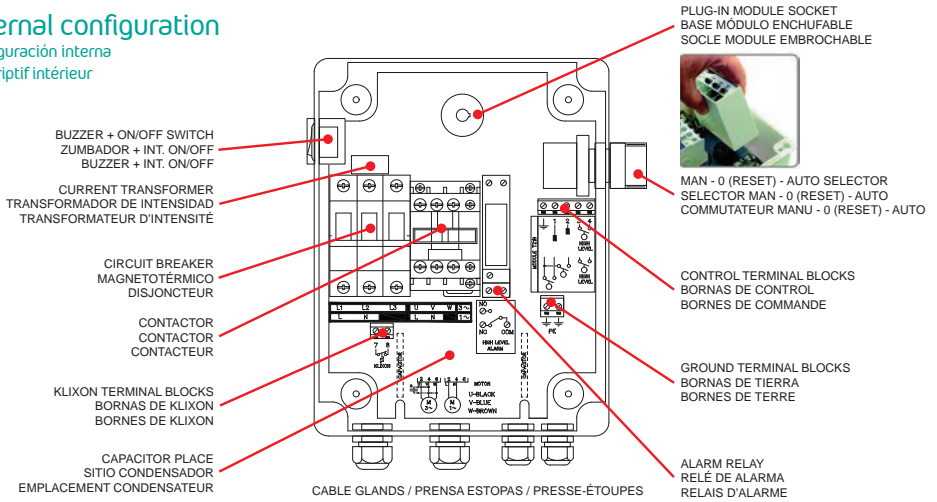
# VIGILEC ZERO DRAIN V1ZB

quick guide - guía rápida - guide rapide

## Internal configuration

Configuración interna

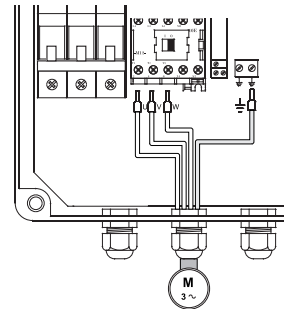
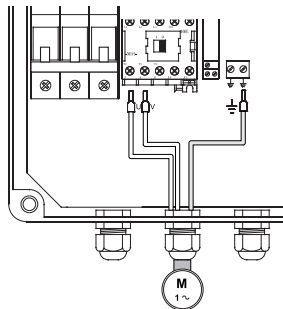
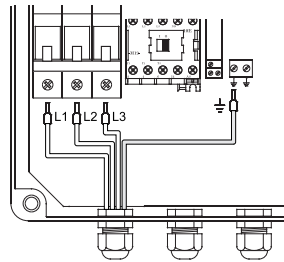
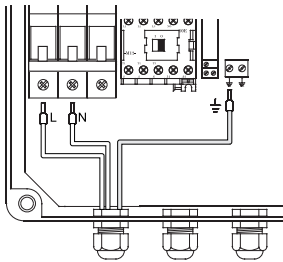
Descriptif intérieur



## Power connections

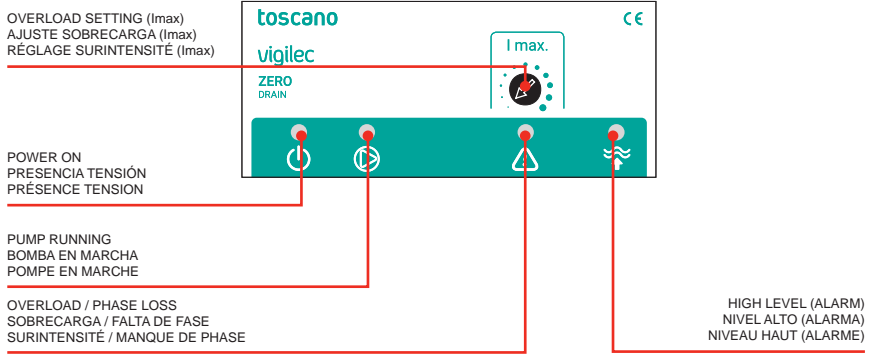
Conexiones de potencia

Raccordements de puissance



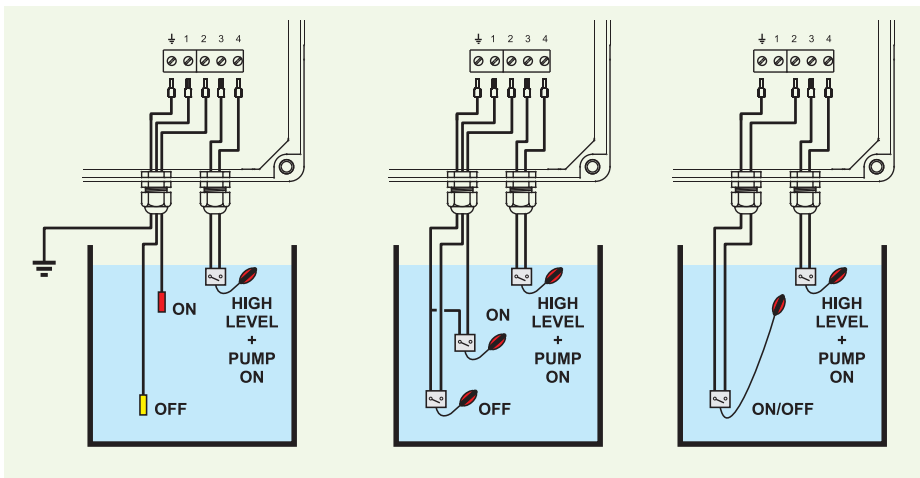
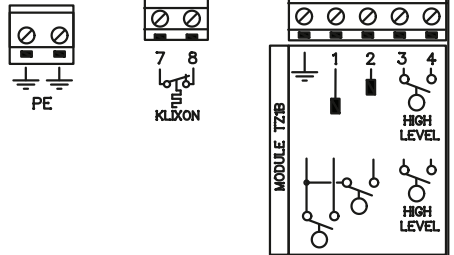
# Control module

Módulo de control  
Module de contrôle



# Control connections

Conexiones de control  
Raccordements de commande



## High level alarm

Alarma de nivel alto

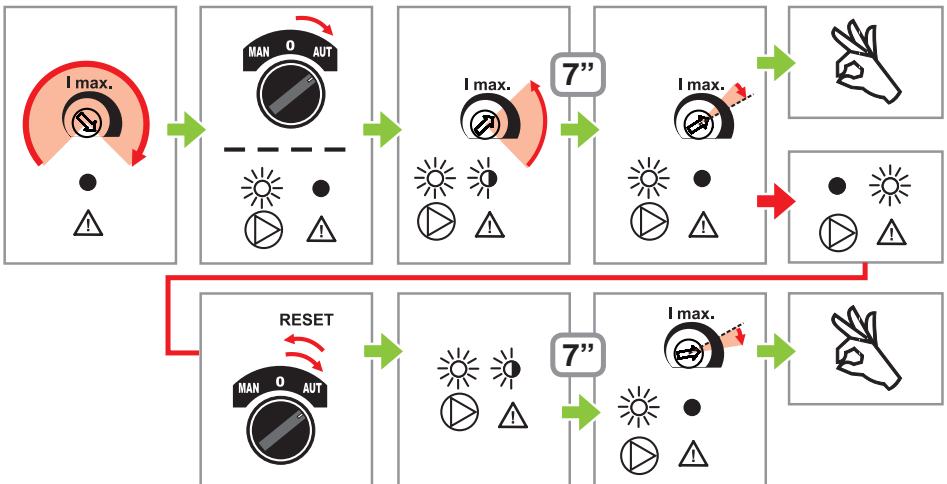
Alarme de niveau haut



## Overload setting (I<sub>max</sub>)

Ajuste de sobrecarga (I<sub>max</sub>)

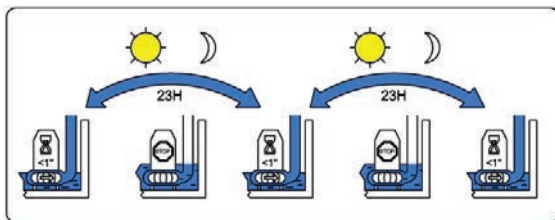
Réglage de surintensité (I<sub>max</sub>)



# Jammed impeller preventive system

Sistema preventivo de bloqueo rotor (protección anti-bloqueo)

Système préventif de blocage rotor (dégommage automatique)



## Technical specifications

Especificaciones técnicas

Spécifications techniques



Supply voltage	230V~ I/III or 400V~ III (according the model) -20%...+30% / 50/60Hz
Pump current range	1.3...18A / AC3 or 1.3...25A / AC3 (according the model)
Overload setting (alarm trip in 7 seconds)	1.2...19A or 1.2...30A (according the model)
Control mode (ON/OFF levels)	Conductive probes or float switches
Control mode for High level	Float switch
Probes: Supply voltage / Sensitivity	24V~ / 9Kohm (protected against storms transients) Wire distance: 200m maximum Minimum section: 0.5mm <sup>2</sup>
Terminal blocks wiring size	10mm <sup>2</sup> (power) / 4mm <sup>2</sup> (control)
Cable glands configuration	Mains: 1xM20 or 1xM25 (according the model) Motor: 1xM20 or 1xM25 (according the model) Control: 2xM16
Protections	Overload, phase failure, over-voltage, pump wiring failure and wrong control wiring
Alarm contact	10A - 250V~
Alarm contact activation	High level
Acoustic alarm sound level	90dB
Recording information (PUMPCHECK)	Module identification number, counters resets, pump running hours, pump starts, pump alarms and last alarm tripping current
Size/Weight/IP/Temperature	240(height)x190(width)x110(depth)mm / 1820g / IP66 / -10°...+55°C